



# FLEETRITE® PARTS PACKAGING STANDARDS



## TABLE OF CONTENTS

---

- 3 Fleetrite® Parts Packaging Introduction
- 4 Fleetrite Parts Packaging Type Font Usage
- 5 Fleetrite Parts Packaging Approved Colors & Fonts
- 6 Fleetrite Parts Packaging Envelope
- 7 Fleetrite Parts Packaging Poly Bag
- 8 Fleetrite Parts Packaging Corrugated Backer Board
- 9 Fleetrite Parts Packaging Corrugated Carton
- 10 Fleetrite Parts Packaging Folding Carton
- 11 Fleetrite Parts Blister & Clam Pack
- 12 Fleetrite Parts Packaging Branded Elements Placement & Proportions
- 13 Fleetrite Parts Packaging Sizes & Parts Numbers
- 14 Fleetrite Parts Label & Wire Tag Composition
- 16 Fleetrite Parts Packaging Label Specifications
- 18 Fleetrite Parts Packaging Contacts

## INTRODUCTION

---

### WHAT IS FLEETRITE®?

Fleetrите is the Navistar brand of All-Makes aftermarket truck and bus parts available through International® and IC Bus™ dealers. The parts provide quality, value and coverage for all makes of vehicles.

Fleetrите Parts Packaging Standards provides guidance on consistent application to all levels of packaging.

Detailed specifications for materials, strength requirements, sizes, part numbers, printing requirements and procedures for all Fleetrите parts packaging are contained in these standards.

Please see page 18 for contact information.

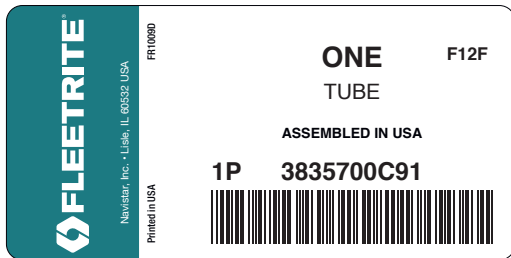


## TYPE FONT USAGE

Consistent use of type fonts is an important part of maintaining a common standard look for all Fleetrite packaging. Listed below are the specific type font standards for the elements illustrated.

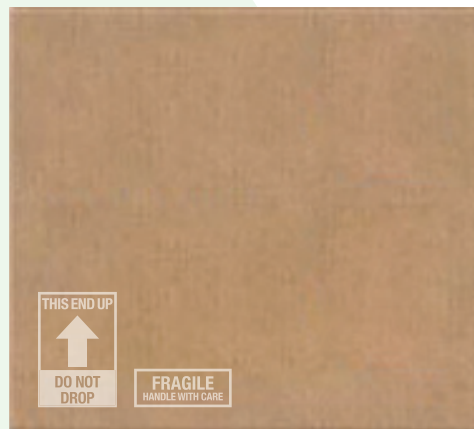
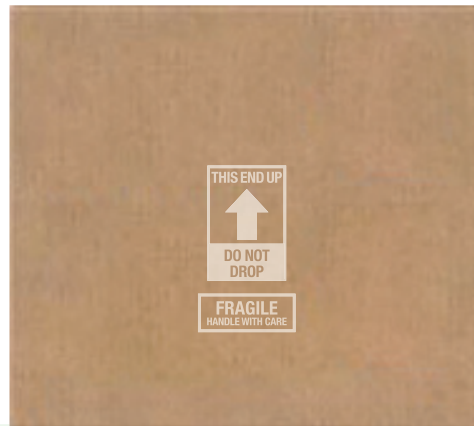
### Label Copy

The preferred typeface on labels is Gotham. Substitutions are allowed, but only fonts that resemble Gotham Medium/Bold (such as Helvetica Neue, Arial or Univers) should be used.



### Additional Packaging Copy

Additional copy, such as “THIS END UP,” is set in Helvetica Neue Roman, all caps. When placed in the center of a panel, the type is centered. If used in a corner, the type is flush left. Substituting other fonts is not permitted.



# APPROVED COLORS & FONTS

---

## Color Palette



Coated PMS 7717C      Uncoated PMS 7718U

CMYK  
80/34/46/8



Coated PMS 358C      CMYK 34/0/55/0



Coated Black      CMYK 0/0/0/20

Uncoated Black

CMYK  
0/0/0/100

## Typography

### Headlines

#### Gotham Black

**ABCDEFGHIJKLMN  
OPQRSTUVWXYZ**

**abcdefghijklmn  
opqrstuvwxyz**

**1234567890**

### Sub heads

#### Gotham Bold

**ABCDEFGHIJKLMN  
OPQRSTUVWXYZ**

**abcdefghijklmn  
opqrstuvwxyz**

**1234567890**

### Body

#### Gotham Medium

**ABCDEFGHIJKLMN  
OPQRSTUVWXYZ**

**abcdefghijklmn  
opqrstuvwxyz**

**1234567890**

## ENVELOPE

Envelopes will simply display the following:

- 1 Fleetrite logo on front only
- 2 Corner mark (L-bracket) to guide label placement
- 3 Corporate address must be visible on the label or the envelope



5.5" x 7" (13.97 x 17.78 cm) sample



12" x 9" (30.48 x 22.86 cm) sample

## POLY BAG

Poly bags will simply display the following:

- 1 Fleetrите logo on front only
- 2 Corner mark to guide label placement
- 3 Corporate address must be visible on the label or the bag

The poly bag panel leaves enough room on the sides, top and bottom to see the parts inside.

All poly bags should be white or clear plastic material with graphics and type flexographed in black, centered on the upper 1/2 of the live area on the white backer area.

Labels may be placed in the center of the lower 1/2 of the bag or can be directly printed on the bag.

Front



6" x 9" (15.24 x 22.86 cm) sample with direct imprint

Back



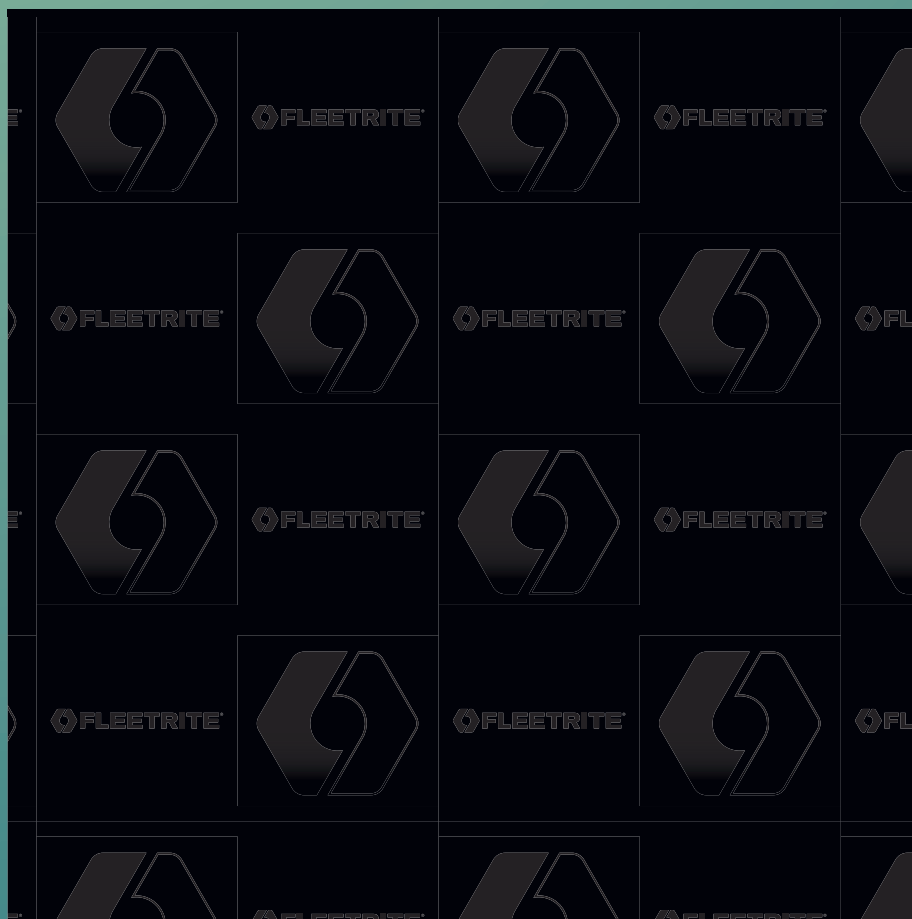
6" x 9" (15.24 x 22.86 cm) sample

See Sizes & Part Numbers on page 13 for specific information.

## CORRUGATED BACKER BOARD

This corrugated backer board can be cut to various sizes and used as a backer board for gaskets and other flat material to be shrink-wrapped. The repeat pattern shows the Fleetrite logo and icon. Corporate address must be visible on the label or backer board.

### Board





## CORRUGATED CARTON

Corrugated cartons will simply display the following:

- 1 Fleetrite logo on front and back panels; side panel will have the bolt icon, sized based on available real estate
- 2 Recycle symbol (if applicable) on bottom of the carton
- 3 Corner mark to guide label placement

Carton top will be free of graphic content.

### NOTE 1:

In the placement of graphic elements, care has been taken to allow tape to continue onto the box sides without covering graphics.

### NOTE 2:

Only brown or clear packing adhesive tape is to be used.

### NOTE 3:

The 3" x 5" (7.62 x 12.7 cm) label is recommended on parts over one cubic foot.

Any carton art or printing created outside of the approved process that does not conform to precise packaging brand standards will be redone, and the costs will be absorbed by the parties involved.



8" x 7.25" x 7.75" (20.32 x 18.42 x 19.67 cm)  
sample (flat)

See Sizes & Part Numbers on  
page 13 for specific information.



## FOLDING CARTON

Folding cartons will display the following:

- 1 Fleetrite logo on front and back panels
- 2 Corporate address must be visible on the label or folding carton
- 3 Optional Features & Benefits panel:

Back panel can be used to list features and benefits as well as any artwork depicting product.

Use only approved fonts in this area and use a minimum of 10 pt. on body type and maximum of 24 pt. on headline type.

All type and graphics must be strictly line art (no halftones or tinting of green background) and reversed (white) to ensure readability.

Carton top will showcase the bolt icon.

All folding cartons are chipboard material with graphics and type reversed out of solid floodcoat of flexographed PMS 7717 C Green.

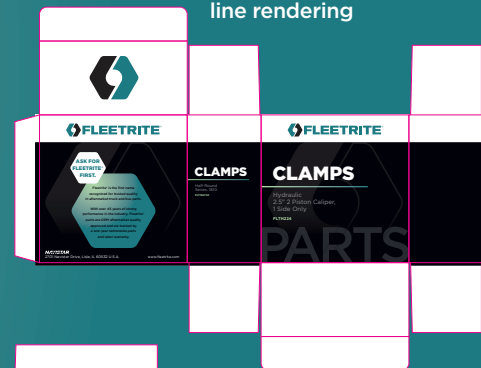
\*Due to the small size of some boxes, the label should be applied to the opposite side.

See Sizes & Part Numbers on page 13 for specific information.

Box with product line rendering



Box without product line rendering



## BLISTER & CLAM PACK

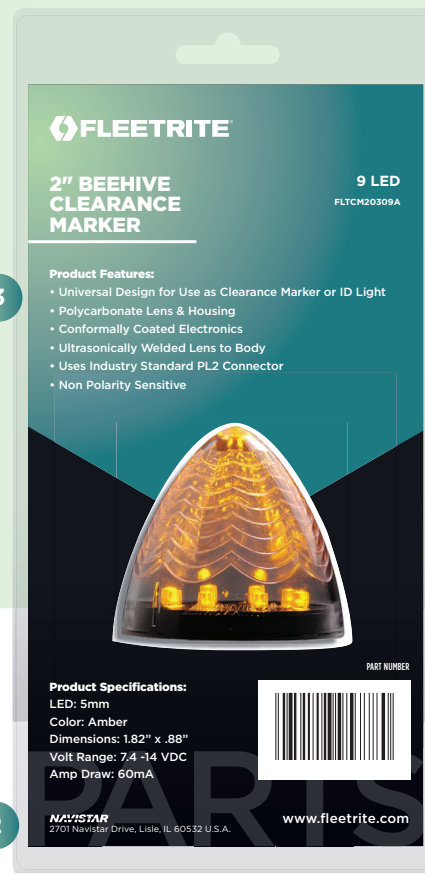
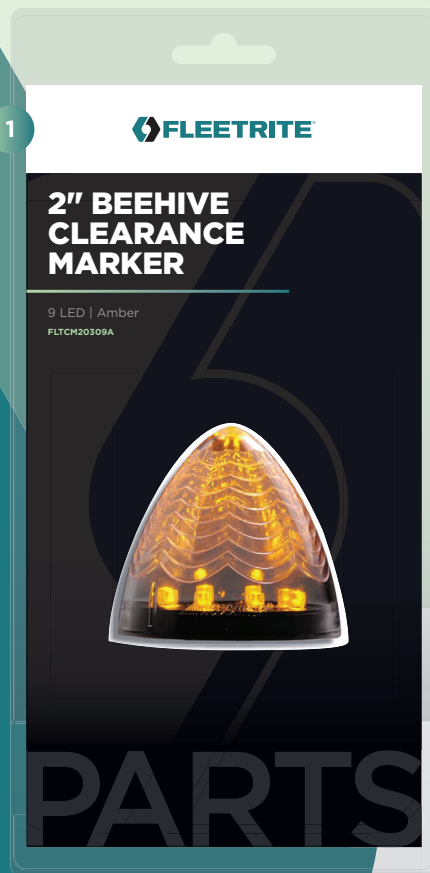
Blister and clam pack will display the following:

- 1 Fleetrite logo on front and back panels
- 2 Corporate address must be visible on the back panel
- 3 Optional Features & Benefits panel:

Back panel can be used to list features and benefits as well as any artwork depicting product.

Use only approved fonts in this area and use a minimum of 10 pt. on body type and maximum of 24 pt. on headline type.

All type and graphics must be strictly line art (no halftones or tinting of green background) and reversed (white) to ensure readability.



## BRANDED ELEMENTS PLACEMENT & PROPORTIONS

### FACE PANEL

- 1 The Fleetrite logo should be NO MORE than 80% and NO LESS than 70% of overall length of box and centered (left to right) on the first 1/4 of the face panel
- 2 The label corner mark's top edge should align midway through the box face; its placement should dictate centered placement of the label, left to right
- 3 The large Fleetrite bolt icon is screened behind, and its top edge should rest on the top edge of the panel

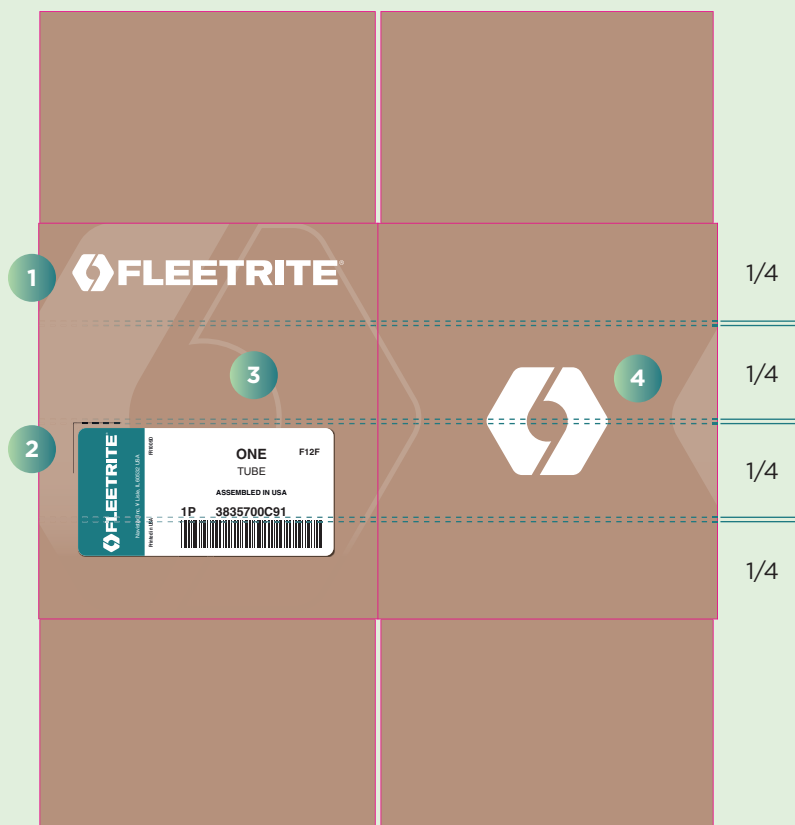
### SIDE PANEL

- 4 The Fleetrite bolt icon is to be proportionately sized to 1/4 of the overall panel height and centered vertically and horizontally

#### NOTE:

Label must ALWAYS be applied in a horizontal position on any/all panels unless there is less than 4" of space available, in which case vertical application is acceptable.

Preference is for retail label to be placed on the face panel.



## SIZES & PARTS NUMBERS

Various packaging options and sizes are available through Veritiv.  
Refer to page 18 for contact information.

POLY BAGS		VERITIV PART NUMBER
ENGLISH (inches)	METRIC (centimeters)	
3 x 5	7.62 x 12.7	FR2031B
6 x 9	15.24 x 22.86	FR2044B
4.5 x 6.5	11.43 x 16.51	FR2033B
4 x 4.75	22.86 x 32.02	FR2034B

BELT SLEEVES		VERITIV PART NUMBER
ENGLISH (inches)	METRIC (centimeters)	
L x W x H	L x W x H	
3.375 x 3.25 x 1.125	9.53 x 8.25 x 2.85	FR1001E
3.375 x 3.25 x 0.75	9.53 x 8.25 x 2.85	FR1002E

FOLDING CARTONS		VERITIV PART NUMBER
ENGLISH (inches)	METRIC (centimeters)	
L x W x H	L x W x H	
2 x 2 x 6	5.08 x 5.08 x 15.24	FR1001E
4.25 x 3.75 x 4.75	10.8 x 9.53 x 12.07	FR1002E

LABELS		VERITIV PART NUMBER
ENGLISH (inches)	METRIC (centimeters)	
2 x 4	5.08 x 10.16	FR1009D
3 x 5	7.62 x 12.7	

WIRE TAG LABEL		VERITIV PART NUMBER
ENGLISH (inches)	METRIC (centimeters)	
2 x 4	5.08 x 10.16	FR1015D

## LABEL & WIRE TAG COMPOSITION

### SMALL 2" x 4" (5.08 x 10.16 cm)

Imprinted type can vary in size, but should follow the Label Specifications on page 16 with the part number always in the lower, centered position in a larger size. Consistent placement of information makes label reading easier.

**NOTE:**

The green field containing the logo and address is 1/4 (one-fourth) the width of the actual label. Labels have radius corners of 0.175" (4.4 mm) for aesthetic purposes.

Use the Arial font, flush right in all caps for the words "ASSEMBLED IN ..." for the actual part number, name of part, etc. Imprints can be made using the warehouse's default font if Arial is not available.



### LARGE 3" x 5" (7.62 x 12.7 cm)

Imprinted type can vary in size, but should follow the Label Specifications on page 16 with the part number always in the lower, centered position in a larger size. Consistent placement of any elements makes label reading easier.

**NOTE:**

The green field containing the logo and address is 1/4 (one-fourth) the width of the actual label. Labels have radius corners of 0.175" (4.4 mm) for aesthetic purposes.

Use the Arial font, flush right in all caps for the words "ASSEMBLED IN ..." for the actual part number, name of part, etc. Imprints can be made using the warehouse's default font if Arial is not available.



## LABEL SPECIFICATIONS

Apply the label to the packaging container for the part number. When the quantity is one, the word “one” is used. If the quantity is greater than one, the numeral is to be used.

Each Fleetrite® part number label must be imprinted with the following information:

(All Point Sizes Are Minimum Requirements)

The diagram shows a label layout with the following elements and callouts:

- ONE**: Quantity — 16 pt, bold
- F12F**: Age Code — 6 pt, bold
- TUBE**: Description — 9 pt
- ASSEMBLED IN USA**: Country of Origin — 6 pt
- 1P**: Part Number — 16 pt, bold (part of the part number)
- 3835700C91**: Part Number — 16 pt, bold (part of the part number)
- High-Density Bar Code**: High-Density Bar Code

Additional label elements shown in the diagram include:

- FLEETRITE®** logo
- Navistar, Inc. • Lisle, IL 60532 USA
- Printed in USA
- FR1009D

Regardless of brand identification label requirements, all individual bar code labels must include bar code 39 or code 128 (with ANSI/FACT-1 identifiers) and human readable form for:

- 1 The complete ordered part number, including all prefixes and suffixes assigned.
- 2 Other human readable copy as described in the example. Since most of our part numbers exceed 10 positions, the stacked bar code version is preferred. For shorter part numbers, the concatenated bar code version may be used as defined in the RP801C standard.

Other branded labels may be specified for a product line. These labels may be obtained from our source of supply as currently defined.

All individual parts are to be unitized in shipping cartons or stretch-wrapped and marked per the AIAG-B-10 Shipping Carton Standards or superseding standard.

**CAUTION:**  
When AIAG-B-10 shipping parts labels and/or destination labels are used, the labels must not be applied to the retail unit part.

**COUNTRY OF ORIGIN:**  
Products manufactured outside of the USA are required to include “Made in (country).”  
Products manufactured within the USA should specify “ASSEMBLED IN USA.”



## LABEL MATERIAL

White, pressure-sensitive label stock with high-tenacity permanent adhesive and backing sheet. Labels must equal or exceed the following physical and performance requirements:

	General Applications	Thermal Transfer Applications	Reference
Caliper	.0045" ± 10%	.0030" ± 10%	Based on 500 sheets (15" x 38")
Basis Wt.	60# per ream ± 10%	45# per ream ± 10%	
Tensile	MD 32# per inch width	MD 20# per inch width	
Adhesive	General purpose permanent pressure-sensitive adhesive	General purpose permanent pressure-sensitive adhesive	
Adhesive Caliper	.00077" ± 10%	.00070" ± 10%	
Service Temperature Range		-50° to +200° F	-50° to +700° F
Minimum Application Temperature		+40° F	+40° F
Shelf Life		1 year @ 72° F/50% RH	1 year @ 72° F/50% RH

Minimum Peel Strength per ASTM-D903, Minimum lb./in.

	10 Minutes	1 Hour	24 Hours	Tamper Feature <sup>(1)</sup>
Treated Poly Bag	1.4	*	*	*
Untreated Poly Bag	0.5	0.8	1.4	1.4
Corrugated 275# Box	2.1	2.4	2.3**	**
Painted Metal	*	*	*	*
Stainless Steel FR1009C 4" x 2"	*	*	*	*

\* Label tears

\*\* Label removes with approximately 75-90% corrugated fiber coverage on adhesive side of label. Label cannot be transferred to new substrate.

(1) Tamper Feature:

Allow 24-hour setup. Label size approximately 5" x 3". Slow peel off must cause label to destruct or carry enough substrate fibers to render nontransferable.

## CONTACTS

### BRANDING

Kelly Bullock

Product Manager,  
Private Label Parts Brands

331-332-3557  
kelly.bullock@navistar.com

### PACKAGING QUESTIONS

Steven Jackson

Packaging Specifications Manager

331-332-2895  
steven.jackson@navistar.com

### PACKAGING MATERIAL

Shaun Trimarco

Veritiv

947-652-1092  
shaun.trimarco@veritivcorp.com

Dave Lavery

Sr. Packaging Analyst

331-332-1213  
dave.lavery@navistar.com

All material in this brochure is as accurate as known at time of publication, but is subject to change without notice. Fleetrite® is a registered trademark of Navistar Inc.

